

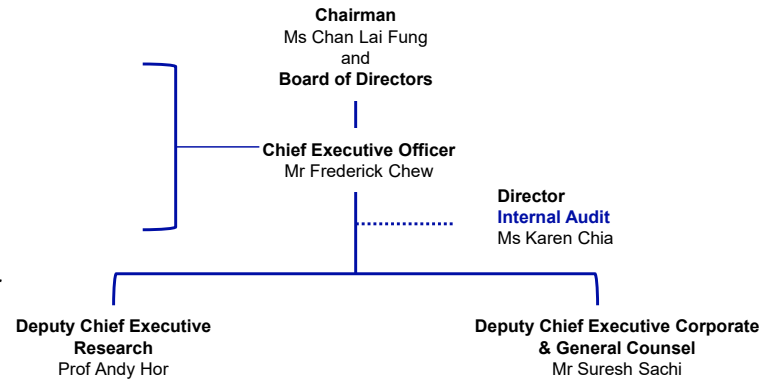
Chairman, SEAC
Prof Sir John O'Reilly

Chairman, BMAC
Prof Barry Halliwell

Chief AI Scientist
Prof Ong Yew Soon

Chief Innovation Officer
Dr Peter Nagler

Chief Sustainability Officer
Prof Yeoh Lean Weng



NATIONAL LEVEL INITIATIVES

- Chief Executive Officer**
Diagnostics Development Hub
Dr Sidney Yee
- Chief Executive Officer**
Experimental Drug Development Centre
Dr Damian O'Connell
- Executive Director**
National Metrology Centre
Dr Gregory Goh
- Chief Executive Officer**
National Robotics Programme
Prof Quek Tong Boon
- Executive Director**
National Supercomputing Centre
A/Prof Tan Tin Wee
- Chief Executive Officer**
Technology Centre for Offshore and Marine, Singapore
Prof Chan Eng Soon

ENTERPRISE DIVISION

- Assistant Chief Executive**
Prof Tan Sze Wee
- International Operations & Relations Office**
- Office of Grant Administration**
- National Programmes**
- BMS Industry Partnership Office**
- Consortia Management Office**
- Low Energy Carbon Research Coordinating Office**
- National Additive Manufacturing Innovation Cluster**
- National Quantum Office**
- Singapore Biodesign**
- Urban Solution and Sustainability Innovation & Enterprise**

A*ccelerate Technologies Pte Ltd

- Covering Chief Executive**
Prof Tan Sze Wee
- A*ccelerate subsidiaries**
- A*ccelerate Venture Creation Pte Ltd**
- A*STAR (Suzhou) Co. Ltd**

BIOMEDICAL RESEARCH COUNCIL

- Assistant Chief Executive**
Prof Ng Huck Hui
- Executive Director (Talent and Strategic Initiatives)**
Prof Lisa Ng
- Executive Director (Resource Allocation and Optimisation)**
Prof Andre Choo

BMRC RESEARCH ENTITIES

- A*STAR Research Institutes**
- A*STAR Infectious Disease Labs**
- A*STAR Skin Research Labs**
- Bioinformatics Institute**
- Bioprocessing Technology Institute**
- Genome Institute of Singapore**
- Institute of Bioengineering and Bioimaging**
- Institute of Molecular & Cell Biology**
- Singapore Immunology Network**
- Singapore Institute for Clinical Sciences**
- Singapore Institute of Food and Biotechnology Innovation**

Programmes, Platforms and Scientific Services

- Biological Resource Centre**

HORIZONTAL TECHNOLOGY PROGRAMME OFFICE

SCIENCE & ENGINEERING RESEARCH COUNCIL

- Assistant Chief Executive**
Prof Alfred Huan
- Executive Director (Research)**
Prof Reginald Tan

SERC RESEARCH ENTITIES

- A*STAR Research Institutes**
- Institute of High Performance Computing**
- Institute for Infocomm Research**
- Institute of Materials Research & Engineering**
- Institute of Microelectronics**
- Institute of Sustainability for Chemicals, Energy and Environment**
- Singapore Institute of Manufacturing Technology**

Programmes, Platforms and Scientific Services

- Singapore Aerospace Programme Office**
- Pharma Innovation Programme Singapore**

A*STAR GRADUATE ACADEMY

- Executive Director**
Mr Timothy Sebastian
- Executive Director (Designate)**
Ms Tay Chay Wah

RESEARCH OFFICE

- Senior Director**
Ms Ang Ee Luang

JOINT PLANNING HUB

- Group Director & Chief Strategy Officer**
Mr Tan Haryanto Kurniawan
- Director Awards & Scholarships Directorate**
Ms Khoo I-Jean
- Director BMRC Directorate**
Dr Sharon Lim Hui Jun
- Director Enterprise Directorate**
Mr Lim Chee Siang
- Director Planning Directorate**
Ms Adeline Tung
- Director Policy Directorate**
Ms Joanne Lee
- Director SERC Directorate**
Dr Daniel Ong

CORPORATE GROUP

- Group Director Corporate Communications**
Ms Angelina Fernandez
- Group Director Finance**
Ms Joyce Tong Lay Pheng
- Group Director Human Resource**
Ms Rajaswari
- Group Director Leadership & Organisation Development**
Mr Low Chee Seng
- Group Director Digital Transformation, Innovation and Data**
Mr Tay Kheng Tiong
- Chief Information Officer Information Technology Shared Services**
Mr Chris Chau
- Chief Information Security Officer Chief Information Security Office**
Mr Tay Kheng Tiong
- Chief Risk Officer Enterprise Risk Management Office**
Mr Phillip Lim
- Senior Deputy General Counsel Legal**
Ms Jacinta Mahtani
- Senior Director Procurement**
Mr Philip Lim
- Director Office of Safety, Facilities & Administration**
Ms Kerin Lim

AgriTech & Aquaculture

Health & Medtech

Infectious Diseases

Artificial Intelligence, Analytics and Informatics

Robotics

Social Sciences & Technology

Urban and Green Tech