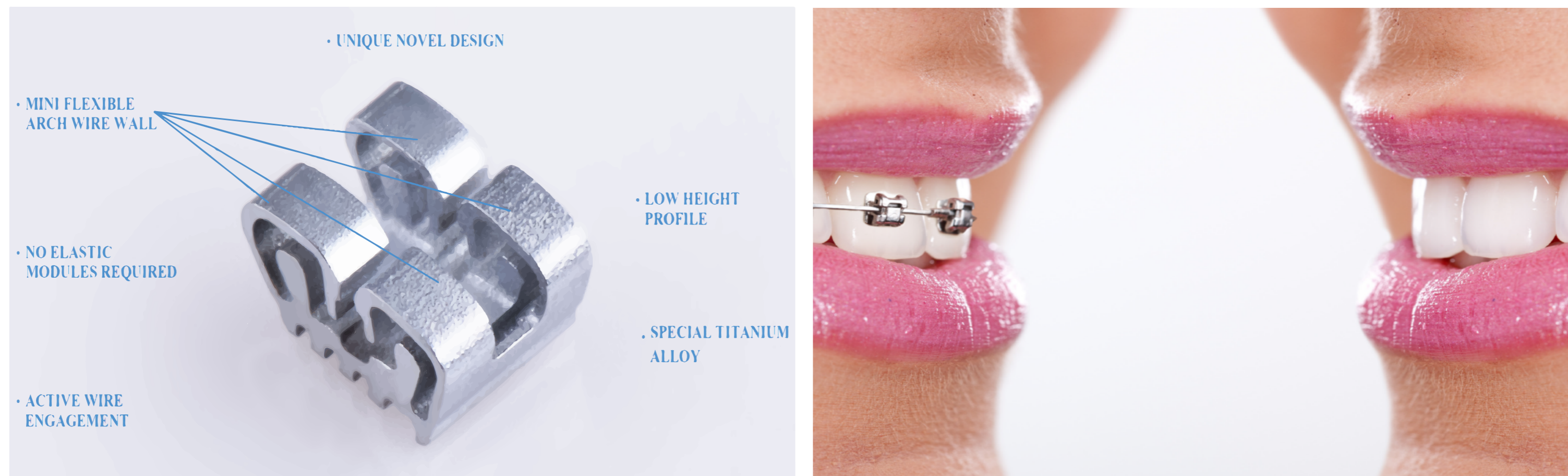


## WORLD'S FIRST NON-LIGATING BRACKET SYSTEM ALLOWS FAST AND EASY APPLICATION OF BRACES AND IMPROVES COMFORT WITH FASTER RESULTS

MATERIAL DEVELOPED THAT INCREASES COMFORT AND EFFICACY OF BRACES



### CHALLENGES

(From left)  
1) The Epsilon non-ligating bracket

Conventional metal brackets causes high level of discomfort and brought about a lot of inconvenience for patients. Frequent visits to the dentists and low treatment efficiency made the process unbearable.

2) Use of braces in teeth straightening

### OUR SOLUTION

A one piece roth-type bracket device utilizing a highly flexible arch wall engagement system using a super flexible titanium alloy, secures the archwire without the need to engage / disengage metal clips or affix elastomeric devices.

This non-ligating bracket system also allows the archwire to flex the wall of the bracket – which in turn acts as a spring to absorb a portion of the reaction force. This results in a uniform pressure on each tooth – accelerating the movement of teeth into the desired positions.

The brackets are specially designed with lower height profile compared to the conventional and self-ligating metal brackets, being less protruding compared to conventional metal brackets, it improves comfort level for patients. Also, it is designed with a flexible entry & exit point for arch wires, allowing brackets to be designed even smaller in size than the norm which improves further patient's comfort.

By eliminating the need for an elastomeric, it did away with all the negative attributes associated with Self Ligating Brackets, including force degradation and attraction of bacterial plaque.

Another change both the lower first and second premolar brackets now have 17° of lingual crown – reducing the tendency of second premolars to tilt lingually during treatment.

### BENEFITS

- Patient's chair time is reduced up to 50%
- Shorter treatment time - time to completion is reduced up to 33%
- Reduces accumulation bacterial plaque and occurrence of spontaneous dislodgement
- Allows bi-monthly instead of monthly maintenance visits
- More even pressure and correctional force
- Greatly improved comfort level for patients

### APPLICATIONS

Commercially available bracket system sold by Innobrace Orthodontics

