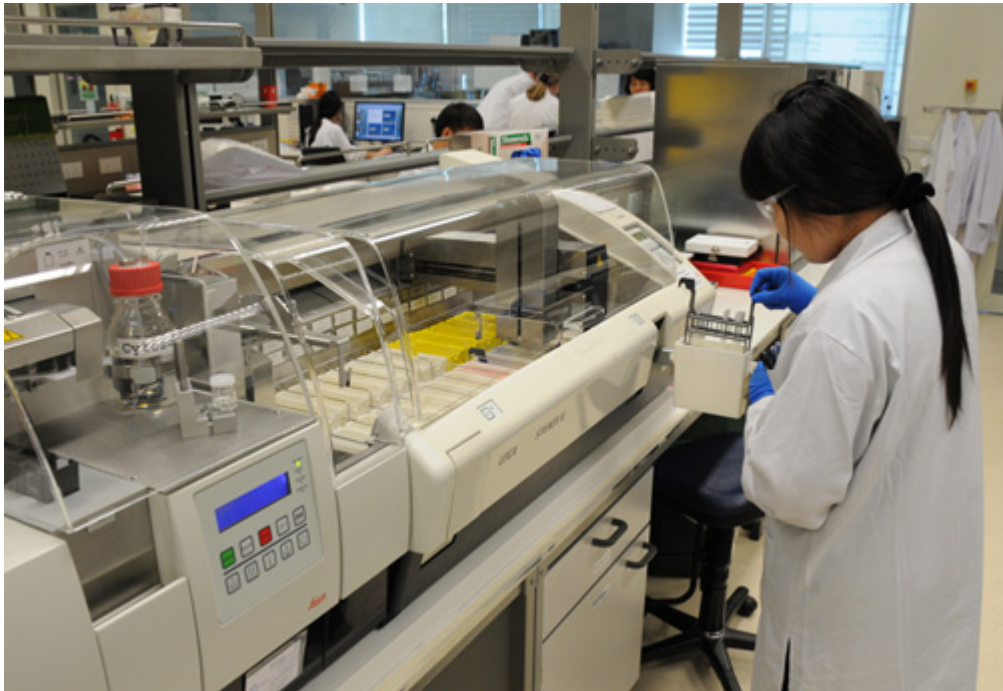


# Services

---

## Research and Toxicologic Pathology Services



We offer:

### **Services Offered:**

- Rodent Necropsy
- On-site technical support
- Routine histology processing
- Immunohistochemistry and immunofluorescence
- Antibody evaluation and optimization
- Publication quality scanning and digital imaging
- Image processing and analysis
- Laser capture microdissection (LCM)
- Tissue microarrays
- Nucleic acid extraction from dissected cells and tissues
- Veterinary pathology evaluation

## Veterinary Surgical Pathology and Necropsy Services



Click [here](#) for more information on diagnostic pathology evaluation for companion and exotic animals

For veterinary pathology diagnostic service details and price list, please click [here](#).

Click [here](#) to download the AMPL Vet Surgical Pathology Submission Form

Click [here](#) to know more about GLP certified invitro toxicity testing platform



(mouse small intestine roll stained for Ki67)

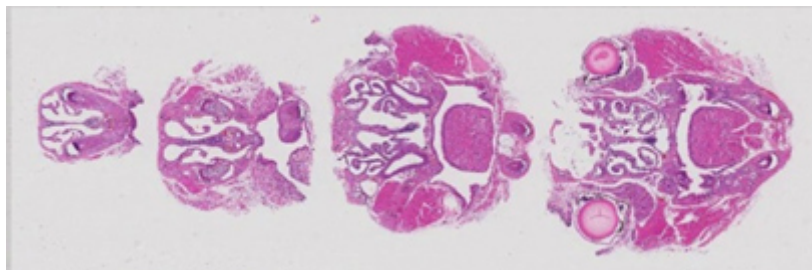
### **Digital Pathology and Image Analysis**

Microscope slides can be digitized using our two slide scanners; Ariol high resolution fluorescence and brightfield or the high throughput Leica SCN400. These complimentary systems produce high quality images which facilitate a range of sophisticated image analysis applications.

### **Examples of virtual slides**

Click the image below to view the virtual slide.

(Requires Chrome, Safari, Firefox or Internet Explorer 9)



Transverse sections of mouse head