

Fluidic Processing Unit (FPU 100)

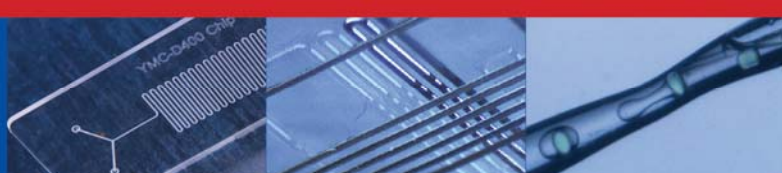
The SIMTech Microfluidics Foundry (SMF) has developed a new multichannel pressure pump which provides a cost effective OEM solution for liquid pumping integration and instrumentation. **FPU 100** is a precise liquid delivery system which supports bottle volumes of up to 50ml, and controls steady fluid pumping.

FPU 100 operates 8 individually addressable flow channels from a single graphical user interface computer software. Control your experiments manually or via a user-defined program. The FPU.100 is a fuss free system with no external pump requirements making it *portable and ideal for low resource settings*.



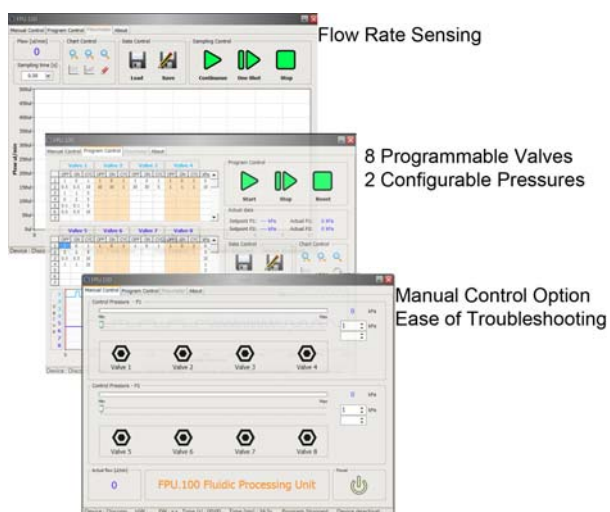
*Programmable pressure pump system for addressing **valving and liquid control** in the nano-litre range.*





General Specifications of FPU.100

Pressure range	Single channel operation: 1kPa ~ 100kPa Quadruple channel operation: 1kPa ~ 80kPa
Total volume reservoir	≤50 ml bottle reservoirs
Pressure resolution	1kPa
Total configurable flow channels	8
Number of pressure levels	2 individually set pressure levels
Pressure source	No external pressure source required
Interface to PC	USB
Power Source	DC12V/1.2A, AC/DC adapter provided
Applications	Continuous flow assays Droplet generation Control of pneumatic valve components
Dimension (L x W x H)	206.3 mm x 292mm x 81.3 mm
Weight	0.5 kg, per pump module



Contact Us

SIMTech Microfluidics Foundry
 2 Fusionpolis Way, #08-04, Singapore 138634
 Tel: +65 6501 1800 | Fax: +65 6250 3659
 Email: smf@SIMTech.a-star.edu.sg
 Website: <http://smf.SIMTech.a-star.edu.sg>